

Vascular plants diversity as indicator of ecosystems quality in TEEB-Russia 2

A.V. Shcherbakov, N.V. Lyubeznova

*Lomonosov's Moscow State University, Biological Faculty;
TEEB-Russia II Project (Biodiversity Conservation Center)*

Atlas der
Farn- und Blütenpflanzen
 der Bundesrepublik Deutschland

937	794	839	751	776	870	1109	1011	828	651	607	553	552	572	340
833	812	912	772	1028	956	1015	789	887	866	768	521	552	529	505
1053	898	764	742	1088	776	786	708	674	715	838	937	546	503	556
1121	971	818	737	756	751	634	727	601	588	618	860	707	402	587
859	859	889	781	575	572	587	685	670	806	654	432	598	503	413
825	835	754	608	501	582	750	674	579	579	545	350	444	452	838
817	743	569	703	770	755	635	525	496	477	506	465	516	537	607
778	636	624	887	786	655	547	512	427	519	511	464	593	550	544
864	696	786	994	734	602	533	470	513	533	601	644	552	321	
800	833	775	985	761	545	449	576	544	649	669	500			
725	878	1070	850	680	702	561	570	472	552	563	230			
719	1077	907	759	675	573	589	610	561	654	693	779			

Flora of the Vladimir province. Vascular plants, bryophytes. Synopsis and Atlas / A.P. Seryogin et al. Tula: Grif and Co., 2012. 620 p.

356	327	291	294	324	257	279	376	385	416	264	285
382	389	289	353	304	330	306	362	388	434	384	
393	411	311	328	377	462	364	414	317	375		
420	366	296	285	423	407	416	415	324	338		
371	346	316	292	379	371	335	498	259			
312	370	365	392	307	360	422	492				
371	490	395	427	394	411	496	562				
327	320	242	326	407	356	307	232				
323	374	349	337	630	526	555	339				
272	387	379	332	587	355	440					
	356	212	355	363	484	352					
				326	376						

Distribution the provinces of the Central Federal Okrug

The provinces was excluded

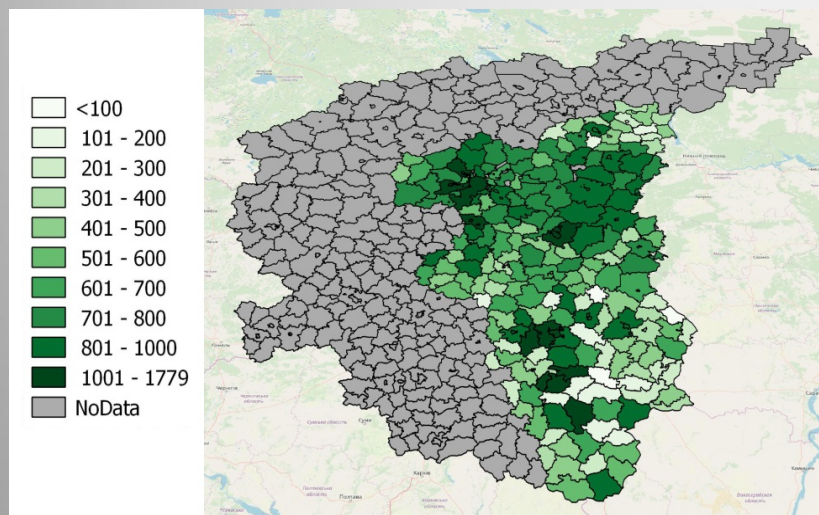
1. Belgorod,
2. Bryansk,
3. Kaluga,
4. Kostroma,
5. Kursk,
6. Oryol,
7. Smolensk,
8. Tver,
9. Yaroslavl

The provinces was includes

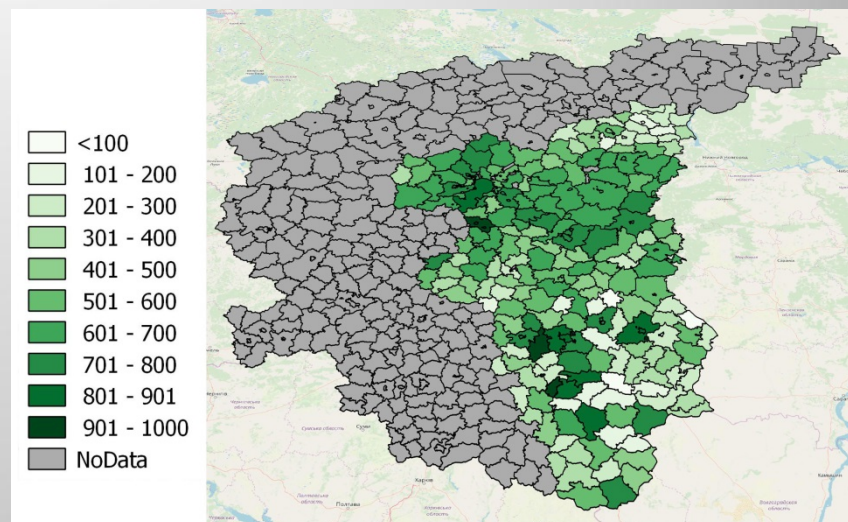
1. Vladimir,
2. Voronezh,
3. Ivanovo,
4. Lipetsk,
5. Ryazan,
6. Tambov,
7. Tula
8. The Moscow region
(Moscow Province and the
city of Moscow)

The number of plant species registered in areas of 8 provinces of the Central Federal Okrug

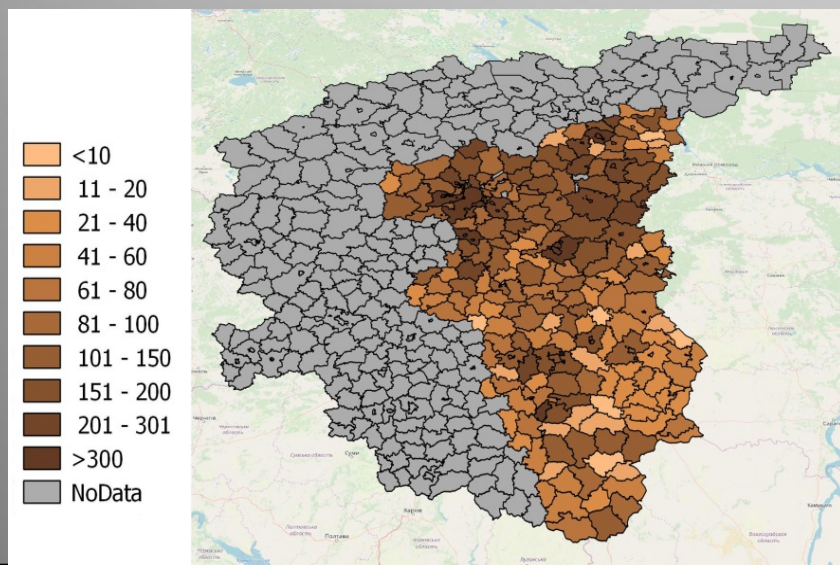
Total number of all species



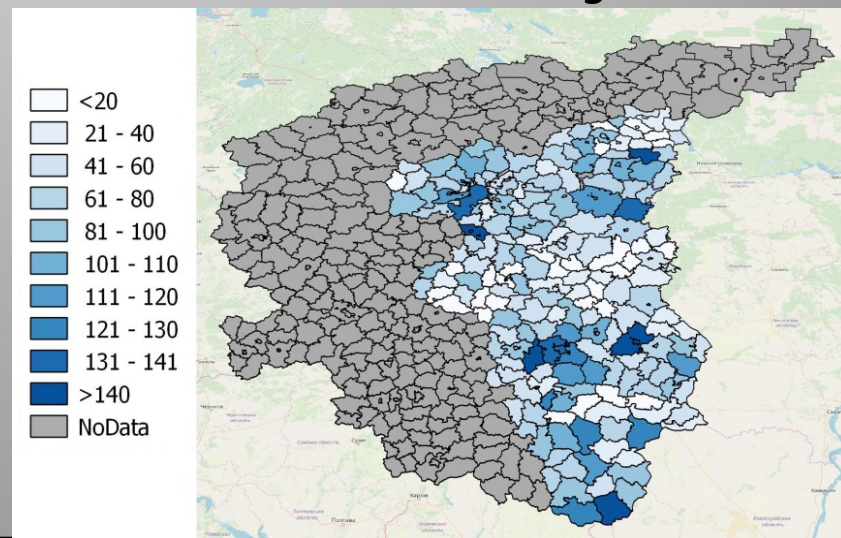
The number of species of natural flora



The number of alien plants

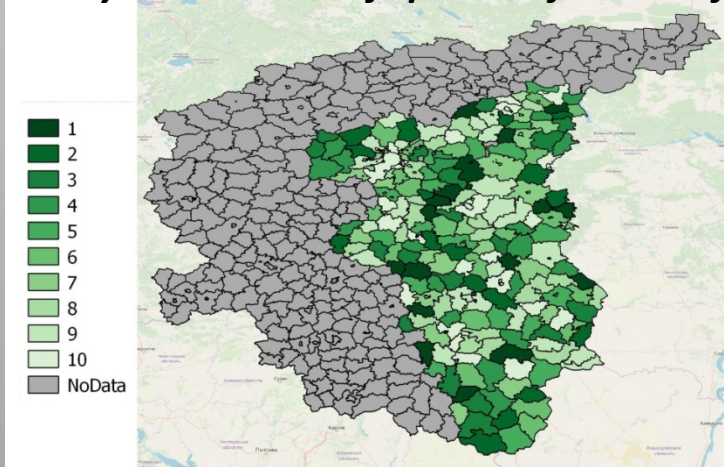


The number of plants included of regional Red Books and monitoring work

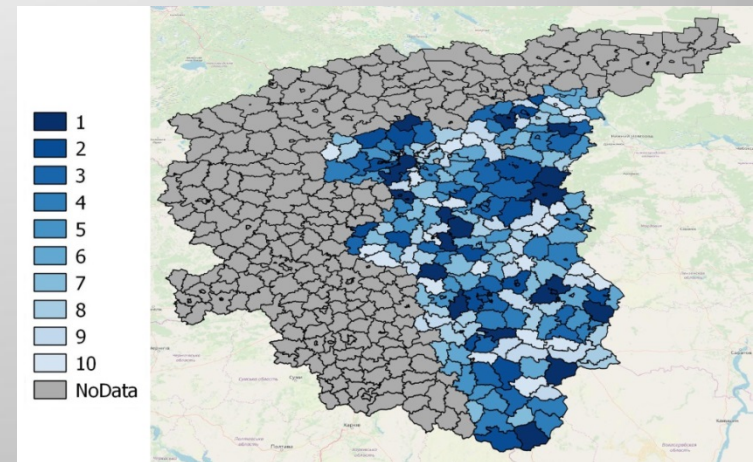


The calculation data of biodiversity of vascular plants in areas of 8 provinces of the Central Federal Okrug

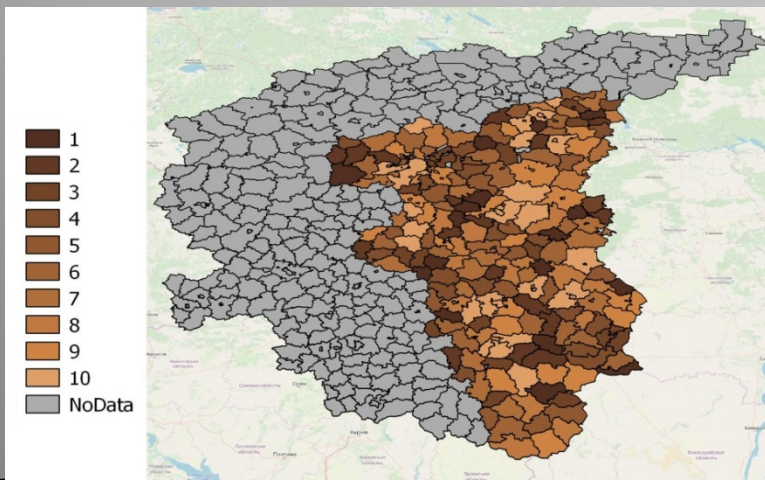
The position of the area by the sum of all species divided by the number of species of natural flora



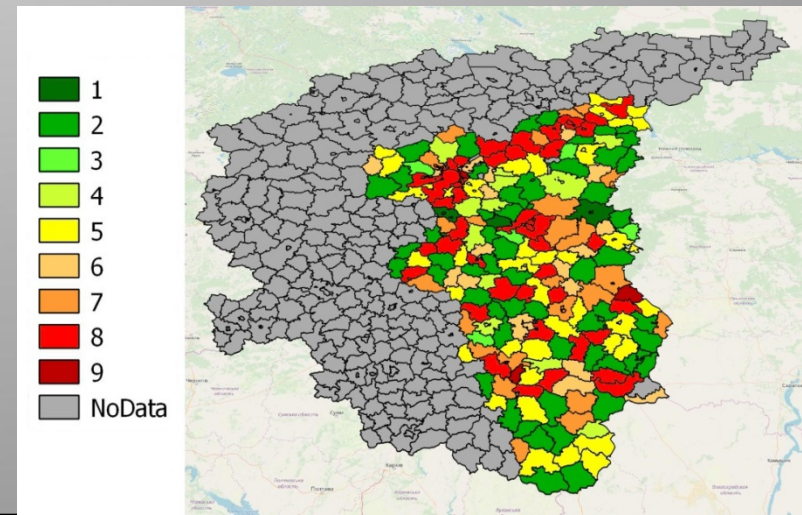
The position of the area by the sum of plants included of regional Red Books



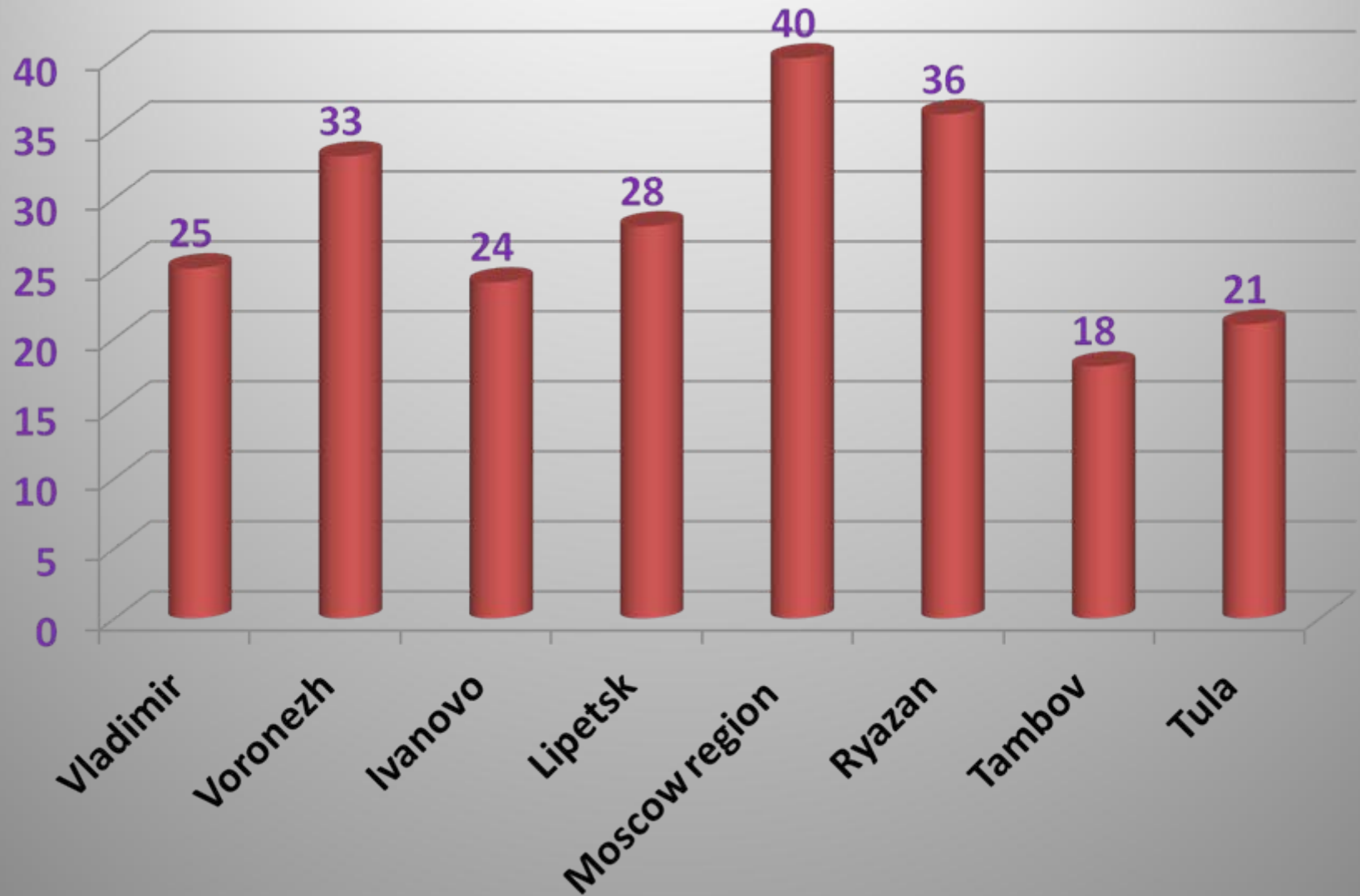
The position of the area by the sum of naturalizing alien species



The total position of the area



Proportion of areas with inappropriate assessment (%)



Reasons for the mismatch of estimates and possible its solutions

- Incomplete knowledge of the flora of certain administrative regions.
- The ambiguity of different parts of one administrative district.
- The study of alien plants and flora of urban areas.
- Features of the study of local flora.
- Different quality of regional Red Books and monitoring work on the study of protected plant species

Possibilities of using and adjusting indicators of plant diversity in TEEB-Russia 2

- Refinement of biodiversity assessment methods and indicators at a more detailed local level.
- Development of extrapolation methods for assessing biodiversity with a lack of primary data.

Thanks for your attention

